



# MONTHLY MEMBERSHIP PROGRESS REPORT

District 5 NW

Results as of: 5/31/2016

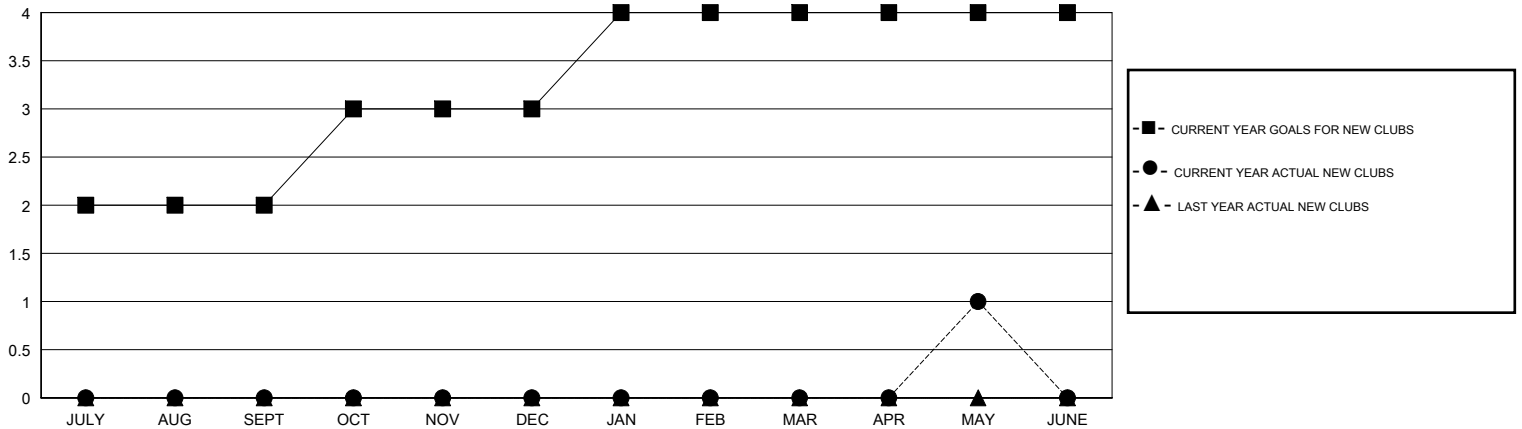
GMT: Judy Hankom

LOCATION NORTH DAKOTA

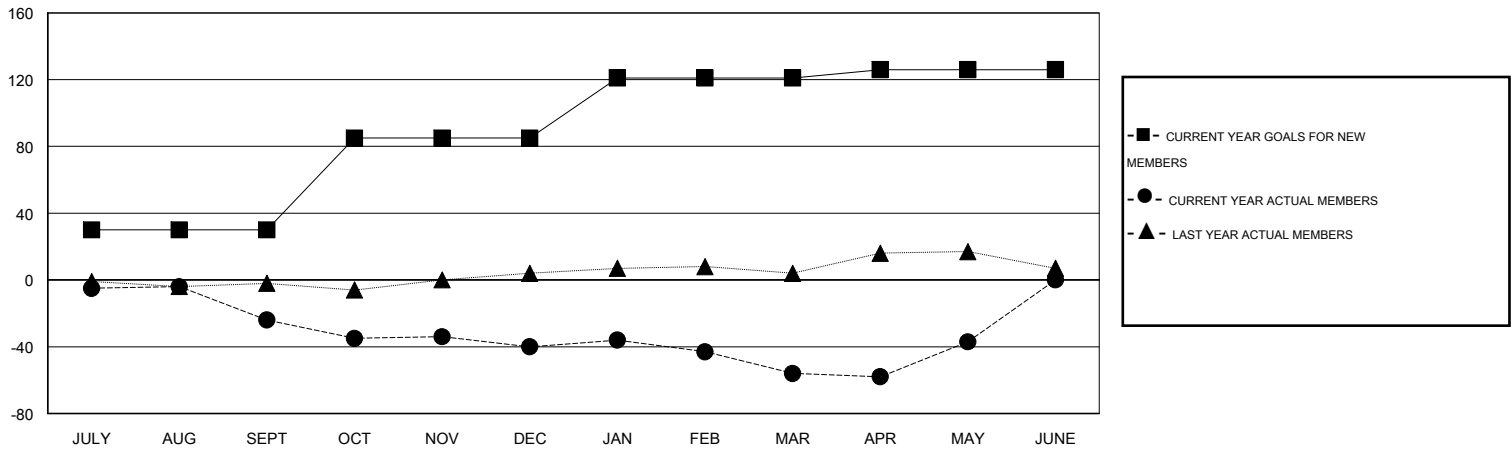
GMT CA 1

Clubs					Members				
RESULTS FOR 2015-2016					RESULTS FOR 2015-2016				
QUARTER	NEW CLUB GOAL	NEW CLUBS	DROPPED CLUBS	NET GAIN/LOSS	QUARTER	NEW MEMBER GOAL	CHARTER AND NEW MEMBERS ADDED	DROPPED MEMBERS	NET GAIN/LOSS
JULY/AUG/SEPT	2	0	1	-1	JULY/AUG/SEPT	30	27	51	-24
OCT/NOV/DEC	1	0	0	0	OCT/NOV/DEC	55	16	32	-16
JAN/FEB/MAR	1	0	0	0	JAN/FEB/MAR	36	27	43	-16
APR/MAY/JUNE	0	1	0	1	APR/MAY/JUNE	5	37	18	19

GOALS AND ACTUAL NEW CLUBS CUMULATIVE



GOALS AND ACTUAL MEMBERS CUMULATIVE



DROPPED CLUBS: 1	32 CLUBS OF 48 ADDED 1 OR MORE NEW MEMBERS	<u>GENDER DISTRIBUTION</u>	
		MALE	841 (67.28%)
<u>DROPPED MEMBERS</u>	<a href="#">CLICK HERE FOR HEALTH ASSESSMENT DATA</a>	FEMALE	409 (32.72%)
DECEASED		13	FAMILY UNIT MEMBERS
CLUB CANCELLED	18	HEAD OF HOUSEHOLD	112
OTHER	113	NON-HEAD OF HOUSEHOLD	116
<b>TOTAL</b>	<b>144</b>		